

Small Mine Permits - Baseline Assessments and Permitting

APPROACH TO SMALL MINE BASELINE ASSESSMENTS

KEY SERVICES

Baseline Assessments:

- Regulating Agency Baseline Reports for Soils, Vegetation, Wetlands and Wildlife
- US Army Corps of Engineers Aquatic Resource Inventories
- Dominant Vegetation Species
- Noxious/Invasive Weeds
- Topsoil Salvage Determinations
- Subcontracting of Services for Archeology
- Subcontracting of Services for Surveying

Permitting:

- Permit Application Document Compilation
- Project Coordination
- Correspondence with Regulating Agency
- Historical Document Searches
- Courthouse Searches
- Surface and Groundwater Rights
- Stormwater Pollution Prevention Plan (SWPPP)
- Mine Plan
- Reclamation Plan
- Public Notices
- Vegetation Qualitative Assessments & Quantitative Sampling
- Wildlife Baselines, Impact Analyses, and Compliance Monitoring
- Wildlife Conservation and Mitigation Plans, and Habitat Enhancement Plans

Since 1981, BKS has conducted baseline assessments for a number of small mine permit projects throughout Wyoming and the western United States. BKS understands the varying requirements set forth by these federal and state regulators and has a long-term working relationship with many operators and regulators. BKS has provided services for the sand and gravel, limestone, bentonite, and scoria mineral extraction industries for small mine designations.

BKS has conducted and/or compiled the following baseline surveys and documents:

- Soil Sampling and Mapping
- Vegetation Assessment and Dominant Species
- Wildlife Assessments
- Aquatic Resource Inventories (wetlands delineations) and Desktop Verifications
- Threatened, Endangered, Proposed, and Sensitive Plant and Wildlife Species Surveys and Assessments

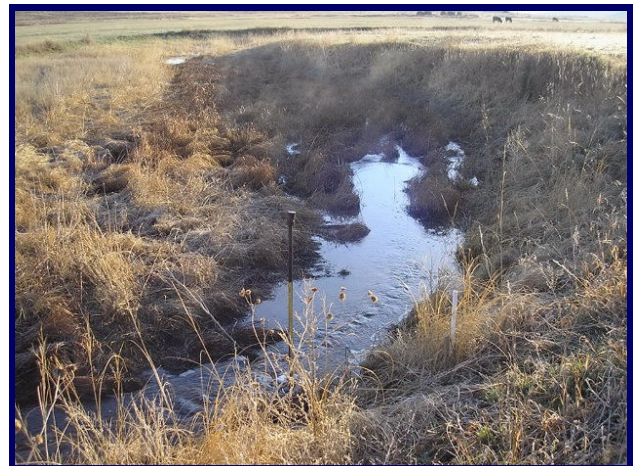


SMALL MINE PERMITTING

BKS has the experience and qualified staff to get your small mine permit application completed and approved by the appropriate regulatory agency. BKS teams with qualified companies in their area of expertise (archeology, surveying and engineering) to put together a complete package for the small mine.

BKS has carried out and completed numerous stormwater pollution, prevention plans and completed mine and reclamation plans that are applicable to the company's standards and best management practices. BKS has also carried out courthouse searches for surface and mineral ownership, searches for surface and groundwater rights, and utility ROW easements.

BKS has served the role as liaison between the client and the regulator. BKS corresponds with the regulator in order to get the application complete and submitted for review. This process reduces the amount of comments received from the regulator when in review.



**Small Mine Permits -
Baseline Assessments
and Permitting**

Client List

- Ararat Rock Products Company
- Black Hills Bentonite
- Basic Energy Services
- Croell Redi-Mix
- Dan Hart Patrol Service, LLC
- Environmental Solutions Inc.
- First Energy Service Company
- Fisher Sand & Gravel Company
- Intermountain Construction
- McGarvin– Moberly Construction
- Mine Engineers, Inc.
- Pete Lien & Sons, LLC
- Phillips & Jordan, Inc.
- Pine Ridge Cattle Co.
- Quality Aggregates & Construction, Inc.
- Reed Construction

- - -

BKS' mission is to provide the highest quality natural resource services to all of our clients.

- - -

All BKS employees have MSHA 24 hour New Miner or 8 hour Annual Refresher Training for Coal and Metal/Non-Metal

VEGETATION & WETLAND SURVEYS

- Vegetation sampling to document the vegetation community and density prior to mineral extraction.
- Vegetation surveys and reporting for bond release
- Aquatic Resource Inventories (wetland delineations)
 - BKS will review CIR imagery and NWI mapping if available to determine potential presence of wetlands or other waters of the United States.
 - BKS is familiar with the USACE supplements– Great Plains, Arid West, and Western Mountains, Valleys, and Coast Regions.

Sampling Techniques:

- Point Line Intercept
- Dominant Species List
- Quadrat Frames
- Shrub Density
- Production Plots
- Photo Documentation
- GIS Analysis
- USACE Aquatic Resource Inventory

SOIL SURVEYS & ASSESSMENTS

Soil surveys will be completed in accordance with:

- WDEQ Guideline No. 1– Topsoil and Overburden and Applicable WDEQ Rules and Regulations
- National Cooperative Soil Survey

BKS provides:

- Soil Mapping Unit Descriptions
- Soil Profile Descriptions
- Report indicating the amount of topsoil present and any limiting factors
- Topsoil Salvage Depths



BKS CONTACT INFORMATION

Gillette

P.O. Box 3467
Gillette, WY 82717
(P) 307.686.0800
(F) 307.686.0880

Rock Springs

P.O. Box 3017
Rock Springs, WY 82902
(P) 307.382.2443

Dickinson

P.O. Box 1930
Dickinson, ND 58602
(P) 701.300.0672

bschladweiler@bksenvironmental.com